

adbri MASONRY

an **ADBRI** company



LANDSCAPE SOLUTIONS

Paving

SOUTH QUEENSLAND

Concrete products, built to last



Australia's Leading Masonry Manufacturer

Adbri produces an innovative range of concrete masonry products for use in residential and commercial paving applications. These durable paving products are proven performers that can be used to enhance your home.

TABLE OF CONTENTS

Euro® Stone	6
Euro® Honed	8
Euro® Classic	10
Quadro™	12
Boulevard®	14
Stradapave®	16
Havenslab®	18
Havenbrick®	20
Havenpave®	22
Turfgrid™	24
Turfstone™	26
Paver maintenance	28
Paver installation guide	30
Paving pedestals/pods	32
Swimming pools	33
Paving patterns	34
How to lay your pavers	35

SYMBOL KEY



PATHS/
STEPPING STONES



BUDGET PAVER



STEPS



GREAT VALUE



ALFRESCO AREAS



AGRICULTURAL



POOL SURROUNDS



PERMEABLE



DRIVEWAY SAFE

Jason Hodges is Adbri's DIY landscaping expert. Jason has over 20 years experience as a landscaper and more recently, an international award winning landscape designer.



Your paving selection guide

It's important to select the right product for your project, to do the job once and to do it well.



STEPS

Quadro™



Page 12

Stradapave®



Page 16

Havenslab®



Page 18



PATHS / STEPPING STONES

Euro® Stone



Page 6

Euro® Honed



Page 8

Euro® Classic



Page 10

Quadro™



Page 12

Boulevard™



Page 14



ALFRESCO AREAS

Euro® Stone



Page 6

Euro® Honed



Page 8

Euro® Classic



Page 10

Quadro™



Page 12

Boulevard™



Page 14



POOL SURROUNDS

Euro® Stone



Page 6

Euro® Honed



Page 8

Euro® Classic



Page 10



DRIVEWAY SAFE

Stradapave®



Page 16

Havenbrick®



Page 20

Havenpave®



Page 22

Turfgrid™



Page 24

Turfstone™



Page 26



AGRICULTURAL

Turfgrid™



Page 24

Turfstone™



Page 26

Stradapave®



Page 16

Havenslab®



Page 18

Havenbrick®



Page 20

Havenpave®



Page 22

Turfgrid™



Page 24

Turfstone™



Page 26

Stradapave®



Page 16

Havenslab®



Page 18

Havenbrick®



Page 20

Havenpave®



Page 22



Euro® Stone

The Euro® Stone range is a popular choice for a high end look on residential and driveway paving* with the on trend palette of greys providing ample opportunity to complement the wider landscape design. A gentle shotblast to the surface of this premium concrete paver, exposes the natural granite and marble stones within, producing a light sparkle in sunlit areas.



Riverina



Zurich



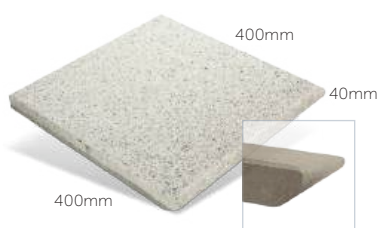
Prague

Due to natural variations in the raw materials we use, colours may vary from batch to batch. Always sight a physical sample before purchase.



Euro® Stone

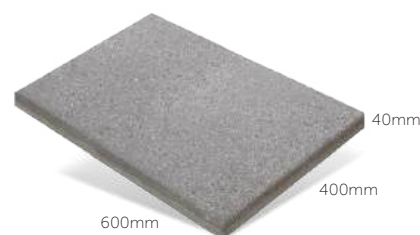
No. per m ²	6.25 units
Approx. Weight	15.3 kg
No. per pallet	108



Euro® Stone Sharknose (made to order)†

No. per L/m	2.50 units
Approx. Weight	13.8 kg
No. per pallet	108

Sharknose only available
in 400 x 400mm



Euro® Stone 600 x 400

No. per m ²	4.16 units
Approx. Weight	21.8 kg
No. per pallet	72

600 x 400mm size only available
in Zurich and Prague colours

- ✓ Suitable for use around saltwater and chlorine pools
- ✓ Premium exposed aggregate surface texture
- ✓ Long lasting, hard wearing
- ✓ Available in 2 sizes





PATHS /
STEPPING STONES



↑STEPS



ALFRESCO AREAS



POOL SURROUNDS



***DRIVEWAY SAFE**
WHEN LAID ON A
SUITABLY PREPARED
CONCRETE BASE

Euro[®] Honed

These premium large format pavers feature a near polished, honed surface texture which increases aesthetic appeal by exposing the natural aggregates within the paver. The highly detailed finish includes a light shot blast which lightly textures the surface which achieves a P5 Slip Rating.



Cyprus

Due to natural variations in the raw materials we use, colours may vary from batch to batch. Always sight a physical sample before purchase.



Euro[®] Honed 400 x 400

No. per m ²	6.25 units
Approx. Weight	15.3 kg
No. per pallet	108

- ✓ Suitable for use around saltwater and chlorine pools
- ✓ Premium exposed aggregate surface texture
- ✓ Long lasting, hard wearing





Euro® Classic

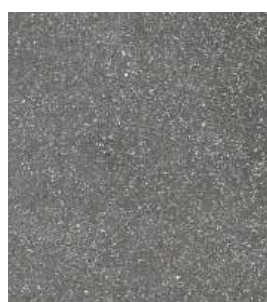
Euro® Classic pavers boast a traditional pressed surface which features a light ensuring suitable resistance to slip, making these pavers ideal for all external paving applications. The smooth, flat surface means these pavers are easy to clean and maintain.



Cyprus



Athens

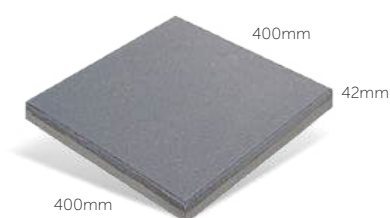


Prague



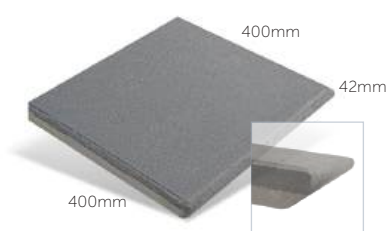
Vienna

Due to natural variations in the raw materials we use, colours may vary from batch to batch. Always sight a physical sample before purchase.



Euro® Classic

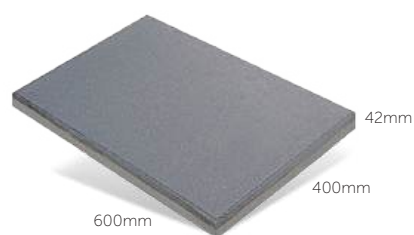
No. per m ²	6.25 units
Approx. Weight	14.0 kg
No. per pallet	108



Euro® Classic Sharknose (made to order)*

No. per L/m	2.50 units
Approx. Weight	14.0 kg
No. per pallet	108

Sharknose only available in 400 x 400mm



Euro® Classic 600 x 400

No. per m ²	4.16 units
Approx. Weight	22.0 kg
No. per pallet	72

600 x 400mm size only available in Prague and Cyprus colours

- ✓ Contemporary smooth surface texture
- ✓ Understated bevel on all 4 edges
- ✓ Suitable for use around saltwater and chlorine pools
- ✓ Long lasting, hard wearing





Quadro™

Quadro™ is a functional large format paver which is perfect for DIY projects around the home. Light in weight and easy to install, Quadro™ will enhance your Outdoor Room.



Oatmeal



Sunstone



Terracotta

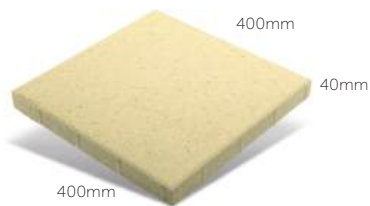


Fossil



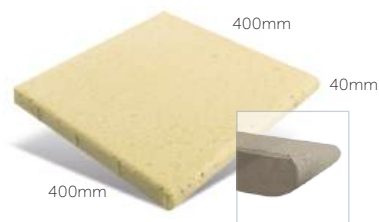
Charcoal

Due to natural variations in the raw materials we use, colours may vary from batch to batch. Always sight a physical sample before purchase.



Quadro™

No. per m ²	6.25 units
Approx. Weight	14.5 kg
No. per pallet	117



Quadro™ Bullnose (made to order)

No. per m ²	6.25 units
Approx. Weight	14.5 kg
No. per pallet	117

(This product is made to order, lead times apply)

- ✓ Easy to lay with specialty spacing nibs
- ✓ DIY friendly - easy to install
- ✓ Modern styling with bevel on all four edges
- ✓ Easy to maintain surface





PATHS



STEPPING STONES



ALFRESCO AREAS



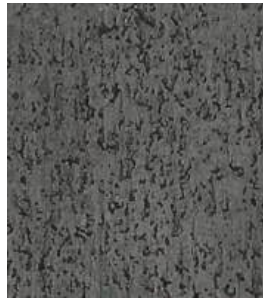
GREAT VALUE

Boulevard[®]

A large paving slab with a traditional smooth, pressed surface, this classic paver is ideal for DIY projects and suitable for alfresco and entertaining areas.



Oatmeal



Charcoal

Due to natural variations in the raw materials we use, colours may vary from batch to batch. Always sight a physical sample before purchase.



Boulevard[®]

No. per m²

5.55 units

Approx. Weight

16.5 kg

- ✓ Large format rectangular paver
- ✓ Pressed smooth finish
- ✓ Bevelled edges for a stylish look
- ✓ Great for alfresco and entertaining areas





Stradapave®

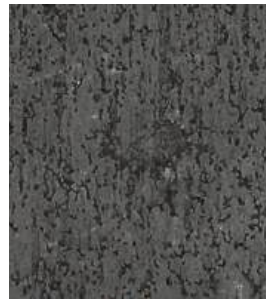
This popular concrete paver is great value, easy to lay and an ideal solution for paving patios, paths, entertaining areas and steps.



Oatmeal



Sunstone



Charcoal

Due to natural variations in the raw materials we use, colours may vary from batch to batch. Always sight a physical sample before purchase.



Stradapave® 50

No. per m ²	11.10 units
Approx. Weight	9.20 kg
No. per pallet	160

- ✓ Versatile paver with bullnose option for stairs
- ✓ DIY friendly - easy to install
- ✓ Affordable, slip resistant paver





PATHS /
STEPPING STONES



ALFRESCO AREAS



BUDGET PAVER

Havenslab®

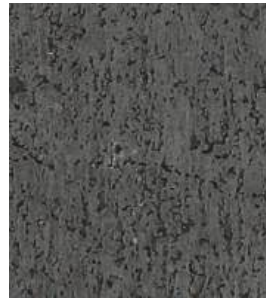
Create eye catching patterns with this popular rectangular paving slab.



Oatmeal



Sunstone



Charcoal

Due to natural variations in the raw materials we use, colours may vary from batch to batch. Always sight a physical sample before purchase.



Havenslab®

No. per L/m	12.50 units
Approx. Weight	8.65 kg
No. per pallet	180

- ✓ Affordable rectangle paver
- ✓ Create paving patterns including herringbone
- ✓ Great for alfresco and entertaining areas





Havenbrick®

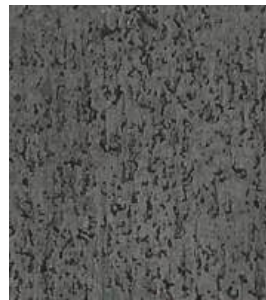
This versatile concrete brick paver is suitable for home DIY projects including patios and garden paths.



Oatmeal

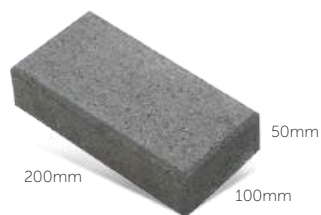


Sunstone



Charcoal

Due to natural variations in the raw materials we use, colours may vary from batch to batch. Always sight a physical sample before purchase.



Havenbrick®

No. per m ²	50 units
Approx. Weight	2.10 kg
No. per pallet	726

- ✓ Traditional brick shape paver to create patterns
- ✓ Light weight, easy to lay
- ✓ Modern styling with bevel on all four edges





Havenpave®

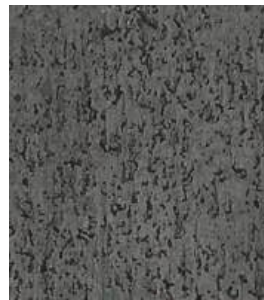
This budget concrete paver is the ideal DIY solution for a variety of projects around your home.



Oatmeal



Sunstone



Charcoal

Due to natural variations in the raw materials we use, colours may vary from batch to batch. Always sight a physical sample before purchase.



Havenpave®

No. per m ²	25 units
Approx. Weight	4.10 kg
No. per pallet	360

- ✓ Stylish bevel on all four edges
- ✓ Light weight, easy to lay
- ✓ Easy to maintain smooth surface finish





PATHS



AGRICULTURAL



PERMEABLE



DRIVEWAY SAFE

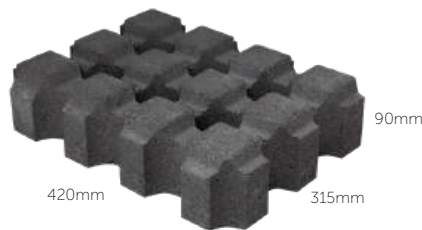
Turfgrid™

This land stabilisation paver is a simple solution to control soil erosion around your home. Strong and versatile, Turfgrid™ can also be used for agricultural and industrial applications, including cattle troughs, and is effective for driveways and garden paths where the ground is often left muddy after rain.



Charcoal

Due to natural variations in the raw materials we use, colours may vary from batch to batch. Always sight a physical sample before purchase.



Turfgrid™

No. per m ²	7.56 units
Approx. Weight	19.5 kg
No. per pallet	84

- ✓ Permeable paver allows water to flow through
- ✓ Can be laid face up or face down
- ✓ Trafficable land stabilisation product
- ✓ Safe for driveways, garden paths, industrial and agricultural applications





PATHS



AGRICULTURAL



PERMEABLE



DRIVEWAY SAFE

Turfstone™

This strong and versatile land stabilisation paver can be used for agricultural applications including cattle troughs and barns. It is also effective for driveways and paths where grass is often left muddy after rain. This simple solution is a great way to control soil erosion.



Natural

Due to natural variations in the raw materials we use, colours may vary from batch to batch. Always sight a physical sample before purchase.



Turfstone™

No. per m ²	9 units
Approx. Weight	13.07 kg
No. per pallet	96

Agricultural Usage

Turfstone™ is the ideal solution for agricultural erosion control projects including stock yards, turf roadways and carparks.

- Results in a flat, even ground surface for livestock
- Minimises water build up and risk to livestock health

- ✓ Permeable paver – water passes into the ground
- ✓ Grass grows through paver
- ✓ Functional land stabilisation paver
- ✓ Suitable for agricultural applications



Paving Maintenance

PAVING ADVICE

For in depth paving advice, tips and hints please visit our website at adbrimasonry.com.au

MAINTENANCE

Pavers will require some ongoing maintenance. Dirt, dust and leaves should regularly be removed whilst any weed growth should be sprayed and controlled.

For more information download the PA03 guide from cmaa.com.au.

SEALING

For aesthetic and maintenance purposes, Adbri Masonry recommends sealing your paving.

CLEANING

All pavers will require cleaning from time to time. Oil, rust, efflorescence and other stains can detract from the appearance of the paver.

Proprietary cleaning products for concrete pavers (and retaining walls) are readily available.

EFFLORESCENCE

Efflorescence is a naturally occurring by-product of the concrete masonry manufacturing process. Paving regularly exposed to a damp environment will prolong the chemical reaction that causes efflorescence, making the appearance of the efflorescence worse.

Although efflorescence can never fully be avoided, there are some tips to help you minimise the likelihood of it affecting your project.



Paver Installation Guide

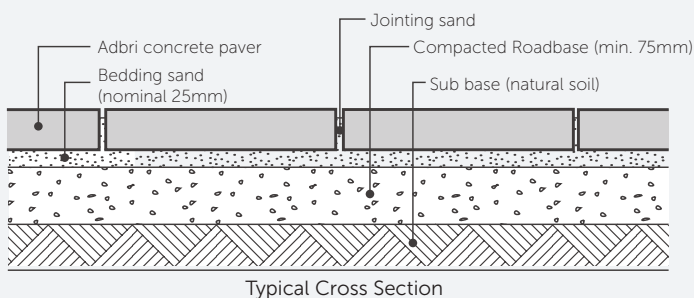
Adbri Masonry pavers can be laid by two methods; Rigid Installation (with a concrete basecourse) or Flexible Installation (a roadbase basecourse). Properly constructed rigid pavements can be more stable where soil conditions are poor (e.g. reactive or poorly drained clay).

Drainage is most important for a successful paving project. Care must be taken to grade the basecourse and the finished pavement level at a minimum gradient of 2% (or 100mm per 5.0 lineal metres). Refer to the CMAA's PA05 document for further drainage details.

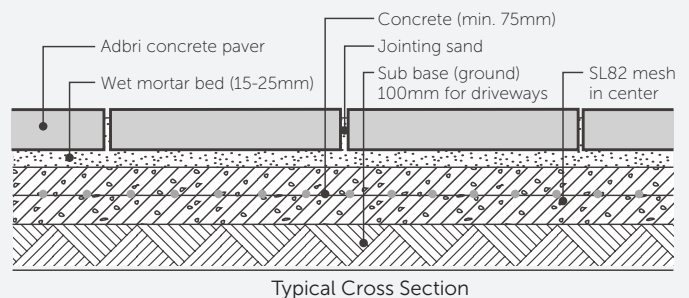
For further information please refer to: Adbri Masonry website at adbrimasonry.com.au and Concrete Masonry Association of Australia (CMAA) Guidelines at www.cmaa.com.au: - PA02 Concrete Segmental Pavements - Design Guide for Residential Accessways and Roads, PA05 Concrete Flag Pavements - Design and Construction Guide.

FOUNDATION OPTIONS AND GENERAL INSTALL GUIDE

FLEXIBLE INSTALLATION - ROADBASE & SAND



RIGID INSTALLATION - CONCRETE BASE



NOTE: Always seeks advice from a qualified professional when laying pavers on sloped land or where soil conditions or load pressures are unknown.



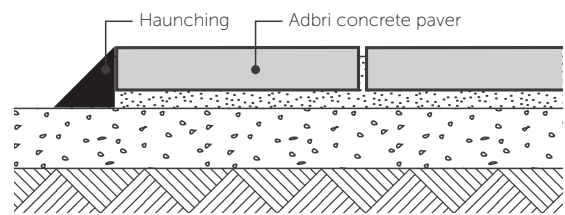
PAVER CUTTING

In some jobs cutting of pavers will be required to fit into specific areas. Wet saws can be hired to complete cuts. Remember to use and wear the appropriate safety equipment.

EDGING / HAUNCHING

It is important to have a good edge restraint to stop the pavers from spreading and to ensure that the bedding sand is not washed away. Here are two general techniques:

1. By laying the edge course pavers on concrete.
2. By haunching the outside paver in concrete to approximately half the height of the paver and back filling with suitable garden material.

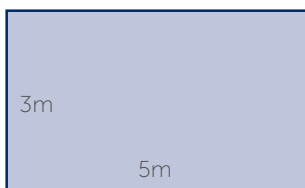


HOW MANY PAVERS WILL YOU NEED ?

Use the helpful diagrams below to measure the desired space you would like to pave. This will give you a total square metre figure, length (m) x width (m) = area (m²).

FOR RECTANGULAR AREAS

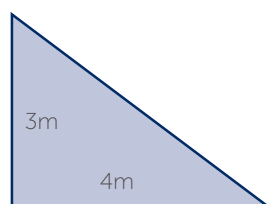
$$\text{base(m)} \times \text{height(m)} = \text{area(m}^2\text{)}$$



$$\text{eg. } 3\text{m} \times 5\text{m} = 15\text{m}^2$$

FOR TRIANGULAR AREAS

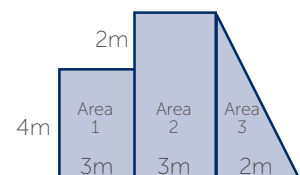
$$1/2 \text{ base(m)} \times \text{height(m)} = \text{area(m}^2\text{)}$$



$$\text{eg. } 1/2 \times 3\text{m} \times 4\text{m} = 6\text{m}^2$$

FOR ODD SHAPED AREAS

Break into sections



$$\begin{aligned} \text{Area 1: } 4\text{m} \times 3\text{m} &= 12\text{m}^2 \\ \text{Area 2: } 6\text{m} \times 3\text{m} &= 18\text{m}^2 \\ \text{Area 3: } 1/2 \times 2\text{m} \times 6\text{m} &= 6\text{m}^2 \\ \text{Total area to be paved} &= 36\text{m}^2 \end{aligned}$$

Paving Pedestals/Pods

The use of pod support systems has grown in popularity for balcony and rooftop applications and is an ideal way to support pedestrian only loads. Pods allow the paving units to be supported over the waterproof membranes that are typically applied in these applications.



Swimming Pools

Pavers are an excellent choice for paving around pools. **Only Euro® range pavers are suitable for use around pools** as they meet Australian slip resistant standards and are chlorine and salt resistant. Adbri Masonry recommends sealing pavers used in pool areas.



Paving Patterns

There are many paving patterns you can choose to add character to your space. Understanding the patterns can assist you in choosing pavers as some patterns are more suited for rectangular pavers and others square.

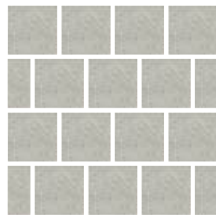
Some important things to consider are:

- Some patterns will require cuts
- 'Stretcherbond' and 'Stackbond' are considered the most DIY friendly as it requires minimal cutting and leaves little wastage
- On a flexible base (compacted road base and sand), pavers must always be laid with a 3mm gap to avoid the edges chipping.

SQUARE PAVERS



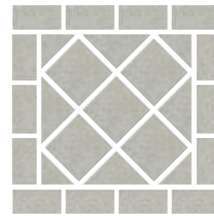
Stackbond



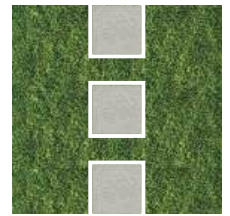
Stretcherbond



45° Stackbond

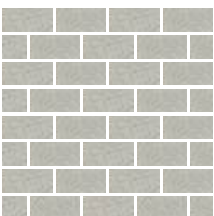


45° Stackbond
with header course

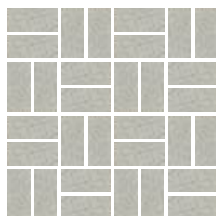


Step Stones

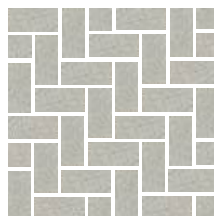
RECTANGULAR PAVERS



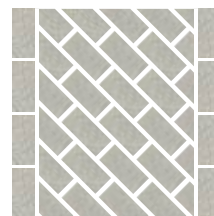
Stretcherbond



Basketweave



Herringbone



45° Stretcher
with header course



45° Herringbone
with header course

How to Lay Pavers (Flexible Installation)



YOUR CHECKLIST

- ✓ PPE – Gloves, safety glasses, hearing protection and respirator (if cutting)
- ✓ String line and marking spray paint
- ✓ Road base (enough for 75mm compacted depth)
- ✓ Gap sand
- ✓ Measuring tape
- ✓ Rubber mallet
- ✓ Shovel / spade
- ✓ Washed river sand (enough for 30mm depth)
- ✓ Cement (to mix with sand for haunching)
- ✓ Spirit level
- ✓ Timber stakes
- ✓ Wheel barrow
- ✓ Plate compactor
- ✓ Float and trowel

STEP 1 Marking out and excavation

The first thing you need to do is to mark out where your paved area will be and excavate approx. 170mm deep.

Don't forget to Dial before you Dig before excavating, call 1100!



STEP 2 Base foundation

Next, add in your road base which serves as your solid base foundation for the pavers.

Then go over the entire area with a plate compactor. Remember your hearing protection!

Then, lay and screed the paving sand to a depth of 25-30mm.

It is very important that you take your time on this step as it will ensure your finished job is of high quality and looks great.

JASON'S TIP:

Use screed rails to make screeding easier.



STEP 3 Laying the pavers

Set up a string line and lay the header course of pavers.

Take your time and remember to leave a 3mm gap between pavers.



STEP 4 Haunching the edges

Haunch in the sides of the paved area to ensure your pavers will stay in their location for years to come!

Using a stiff, damp sand and cement mix, haunch in pavers by applying the mix to the side of the pavers at a 45 degree angle.



STEP 5 Sweep in gap sand and finish

The final step is to sweep gap sand into the paver joints, filling the voids.

Then, compact the pavers to ensure they are embedded and that there is no lipping.

JASON'S TIP:

Attach a piece of old carpet under the plate compactor to avoid damaging pavers.

Finally, lightly spray the pavers with water to remove any excess sand or dust.

Enjoy!









BRICKS

| BESSER® BLOCKS

| PAVERS

| RETAINING WALLS



AdbriMasonryAus



adbrimasonry

1300 365 565 | www.adbrimasonry.com.au | enquiries@adbri.com.au

Free pallet collection service freecall 1800 674 961 or drop pallets back to place of purchase or lodge your pallet pick up online at adbrimasonry.com.au

Pallets remain Adbri Masonry property. Please telephone us for collection of pallets and keep pallets empty and stacked in a safe and accessible area for collection.

Landscape Solutions Paving (SQLD) - February 2025 - ABM1140

Adbri Masonry Pty Ltd | ABN: 31 009 687 521

Euro®, Quadro™, Stradapave®, Havenslab®, Havenpave®, Havenbrick® and the Adbri Masonry logo are registered trademarks of Adbri Masonry Pty Ltd

adbriMASONRY

an ADBRI company